

CERTIFICATE OF LOCATION OF GOVERNMENT CORNER

NORTHEAST Corner of Section 25, Township 105, Range 42, 5TH P.M.

STATE OF MINNESOTA, County of MURRAY

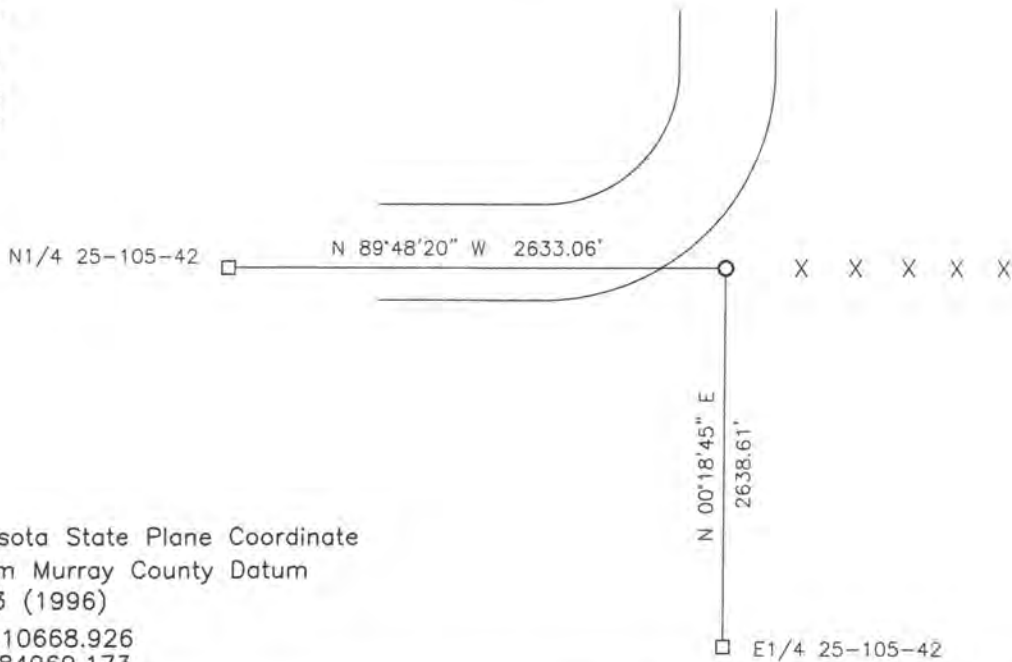
At the corner location shown on the sketch:

On 06-19-2017 found a 5/8" IRON
DATE

left monument as found, lowered monument, removed monument (explain)

On _____ placed a _____
DATE

SKETCH OF REFERENCE TIES



Minnesota State Plane Coordinate
System Murray County Datum
NAD83 (1996)
N: 110668.926
E: 484969.173

Statement of evidence relative to this corner location is on back of page.

I hereby certify that this document and the data contained herein was prepared by me or under my direct supervision.

Daniel L. Bueltel
License No. 43844

8/28/18
DATE

Statement of Evidence

In 1861, Wellman and Smoot did the original subdivision of the township.

On April 16, 1903, J. W. Woolsteincraft set a stone at the corner.

No date, The Murray County Highway Department set a concrete block at the corner.

On May 28, 1988, the Murray County Highway Department found a concrete monument at the corner.

On June 1, 2015, the Murray County Highway Department set a 5/8" iron x 3" iron over the X in the concrete monument.

On June 19, 2017, Bueltel-Moseng Land Surveying found 5/8" iron at the corner. It is 3' south of the centerline of the road to the west, in line with the centerline of the road to the north, and in line with the fence to the east.